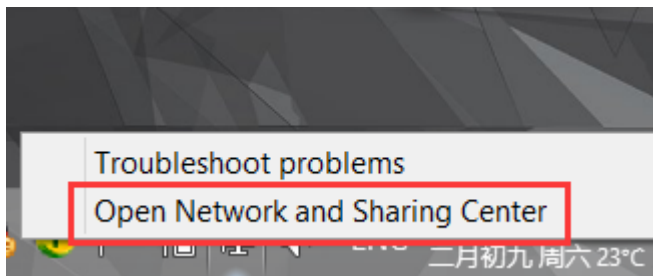


## Set Up VPN PPTP Connection in Windows 8

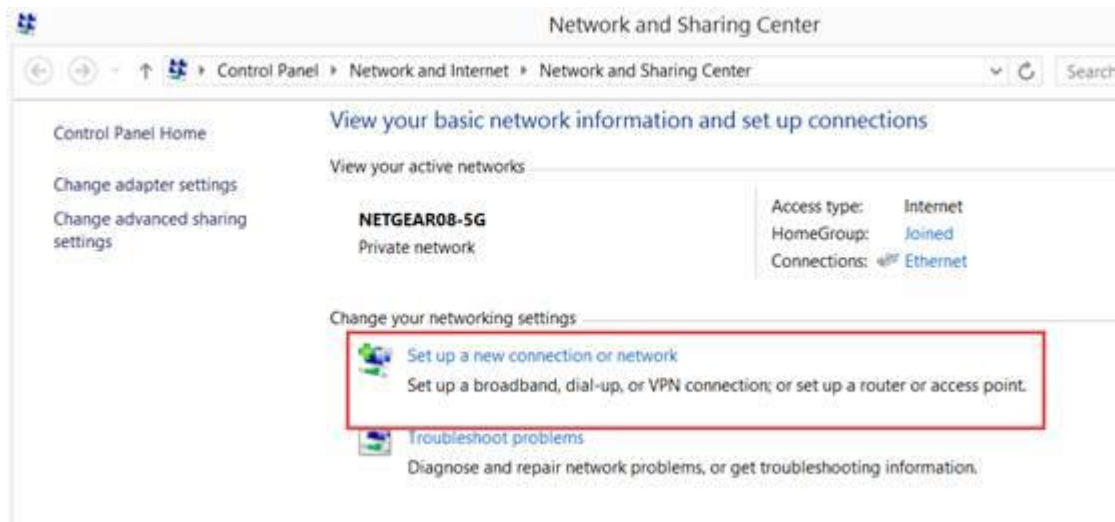
1. Find the Network icon in taskbar.



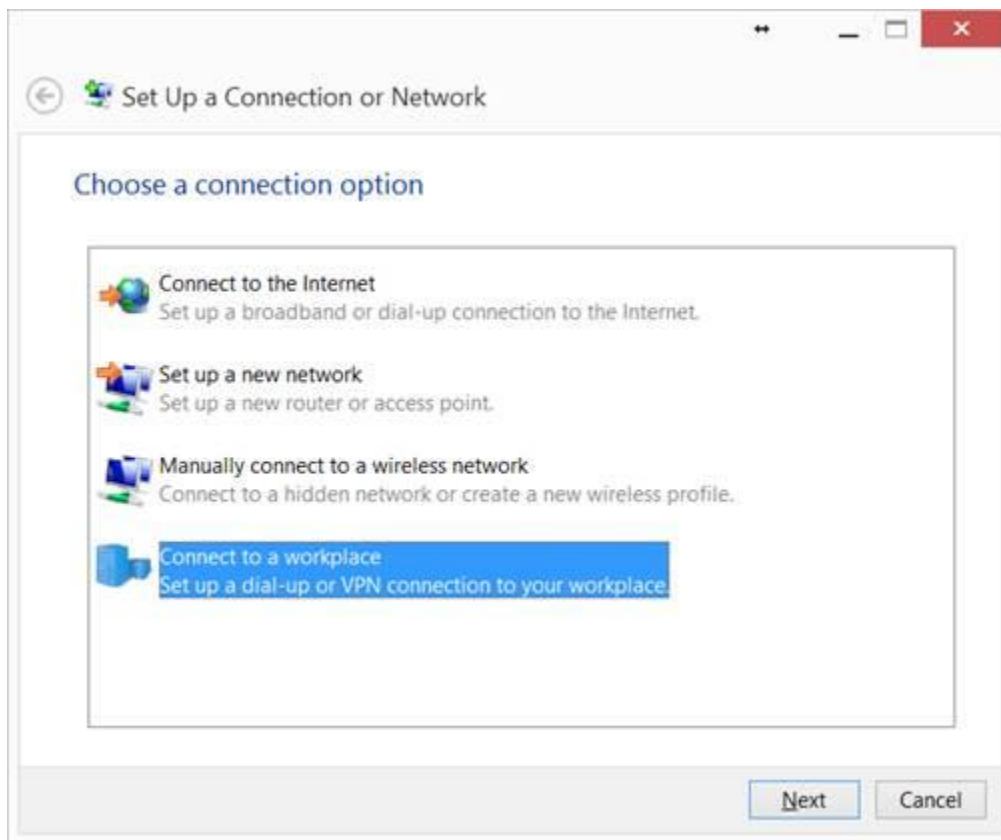
2. Right click and choose 'Open Network and Sharing Center' .



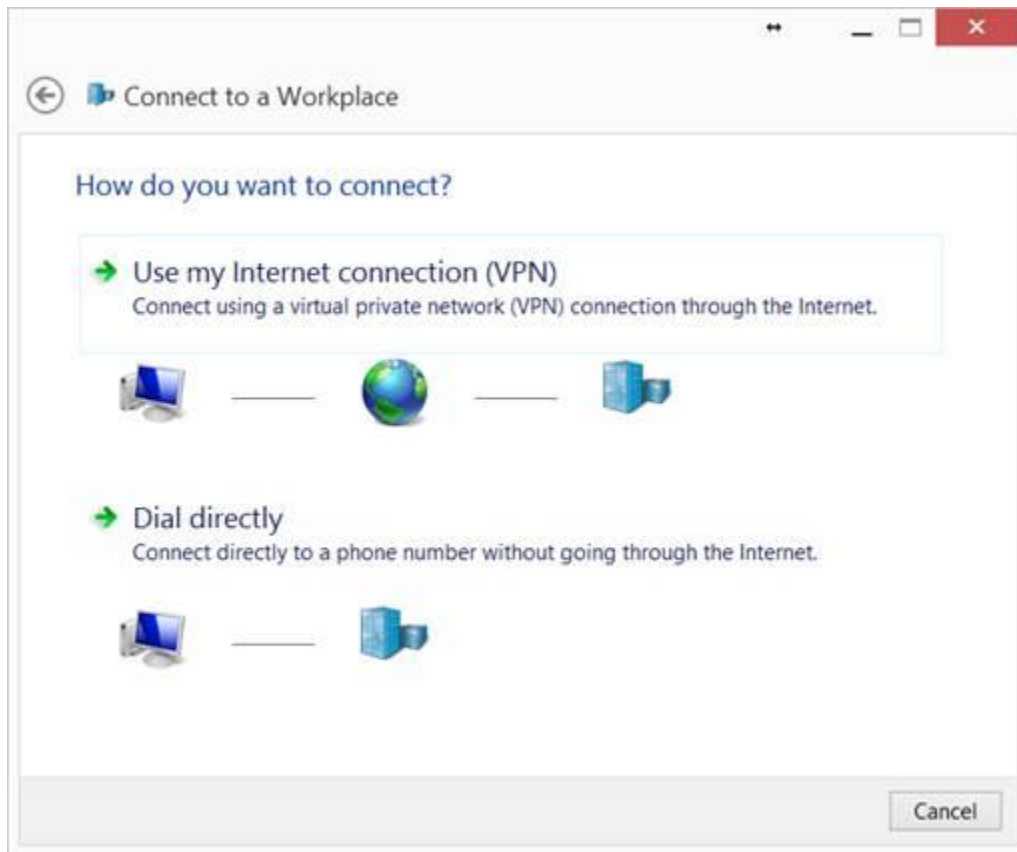
3. Choose 'Set up a new connection or network' .



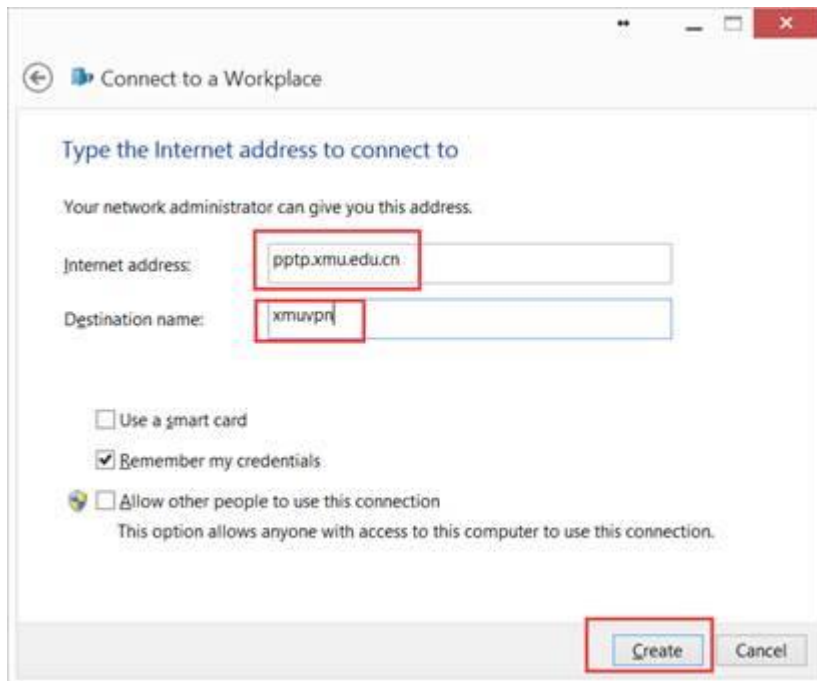
4. Choose 'Connect to a workplace' .



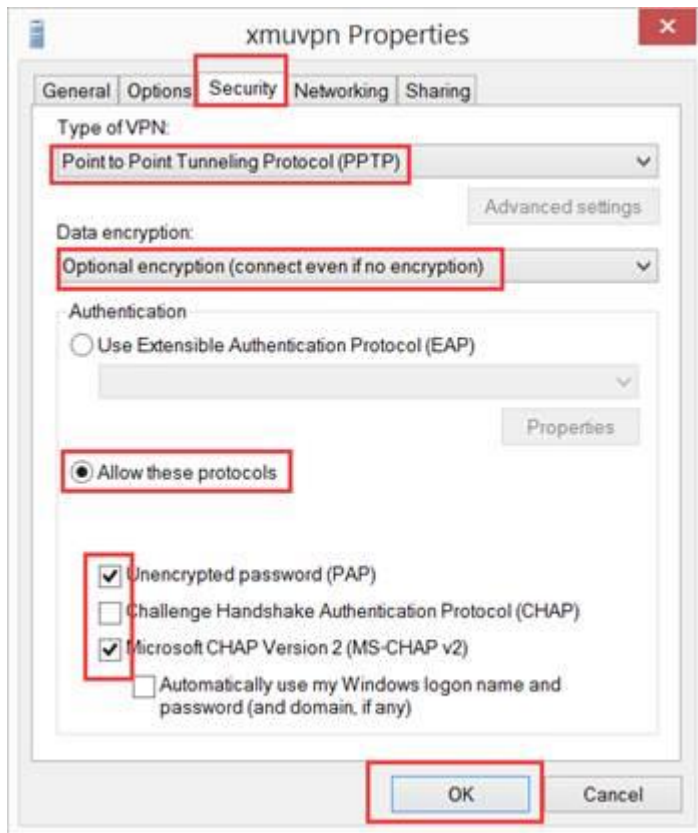
5. Select 'Use my Internet connection (VPN)' .



6. For 'Internet address' , fill in 'pptp.xmu.edu.cn' . For Destination name, you can fill in anything, for example 'xmuvpn' . Then click 'Create' .



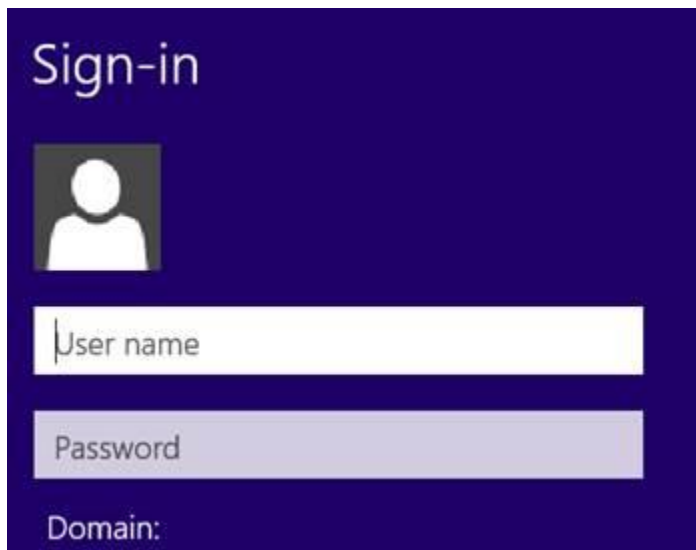
7. Right click the Network icon in taskbar and choose 'Open Network and Sharing Center' (please refer to Step 1 and Step 2). Click 'Change adapter settings', find the newly created 'xmuvpn' icon, right click it and select 'Properties'. Then click the 'Security' tab and follow the instructions below.



8. Click the Network icon in taskbar.



9. Click the 'Connect' of the xmuvpn.



10. Input your campus ID and password for authentication.

## Connections



NETGEAR08-5G  
Connected



xmuvpn  
Connected

When the connection is successful, the xmuvpn will show 'Connected' .